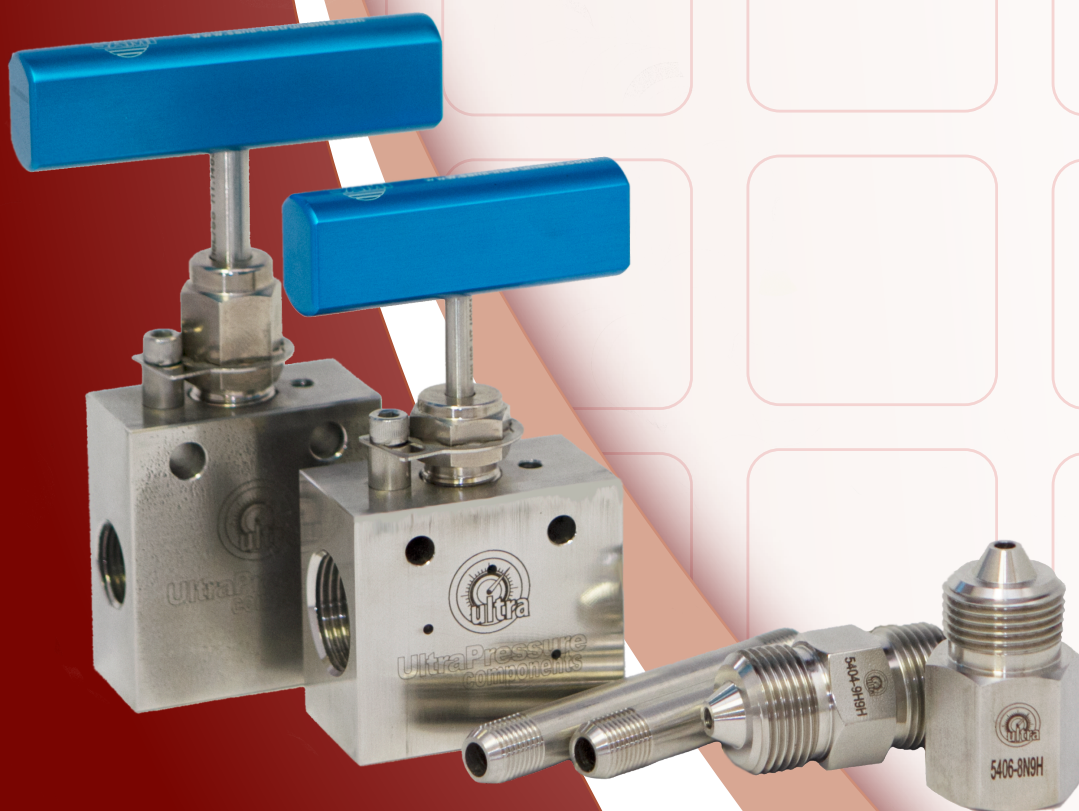
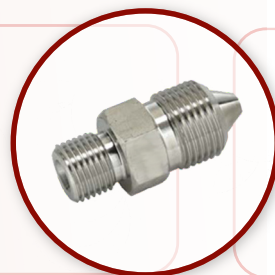


CATALOG

VALVES & FITTINGS



We can handle Pressure





CERTIFICATE OF REGISTRATION

This is to certify that

Ultra Pressure Components

5829 West Sam Houston Parkway N, Suite 805 Houston, Texas 77041 USA

operates a

Quality Management System

which complies with the requirements of

ISO 9001:2008

for the following scope of registration

Distribution of high pressure valves and fittings to customer requirements.

Certificate No.: CERT-0068226
File No.: 1628533
Issue Date: January 23, 2013

Original Certification Date: January 23, 2013
Current Certification Date: January 23, 2013
Certificate Expiry Date: January 22, 2016

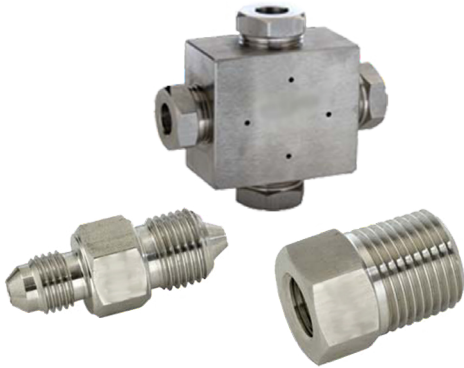
Chris Jouppi
President,
QMI-SAI Canada Limited

Guillaume Gignac, ing.f
Vice President, Corporate Operations, Accreditation & Quality
QMI-SAI Canada Limited



ISO 9001





Standard 316 Stainless Steel Fittings Stocked:

We stock over 700 combinations of the following standard fittings in 316 stainless steel:

- NPT National Pipe Thread
- JIC - 37° Flare
- Medium Pressure - 20K
- High Pressure - 60K
- BSP - British Standard Parallel
- Type M - Hydraulic Hose, reverse high pressure

Standard Part Configurations:

- Hex Nipples - male by male
- Hex Reducers - male by female
- Hex Couplers - female by female
- Round Nipples - male by male
- Round Slimline Couplers - female by female
- Elbows
- Tees
- Crosses
- Gland Nuts & Collars
- Plugs
- Caps



Our extensive product and manufacturing experience gives us the ability to handle all types of non-standard requests.

We usually do not require prints, so if you know what you need, please give us a call.

Standard Fittings in Other Material:

The table below shows the range of materials available for standard fittings

- | | |
|-------------------------|-----------|
| • Aluminum 6061 T-6 | • 17-4 |
| • Nitronic 50 | • 13-8 MO |
| • C1144 Stressproof | • 1018 |
| • Super Duplex 2507 | • 303 |
| • Hastelloy 276 and C22 | • 12L14 |
| • Monel 400 and K-500 | • 304 |
| • Titanium | • 4130 |
| • Inconel 625 and 718 | • 316L |
| • C464 Brass | • 4140 |
| • CDA C510 Bronze | • 4340 |

Non-Standard and Hard-to-Find Fittings:

- Standard connections in unusual sizes
- Standard connections in non-standard lengths
- Standard connections with non-standard ID and/or OD
- Metric, SAE, Socket or Butt Weld connections

Custom Fittings

- Tube to adapter conversions
- Puttings flats on round components
- Manifolds with unusual connection combinations
- Custom parts to drawings/prints



TERMS & CONDITIONS

Values & Fittings Catalog

The items described in this document are hereby offered by Ultra Pressure Components. This offer and acceptance by any customer shall be governed by all of the following Terms and Conditions. Buyer's order for any item shall constitute acceptance of this offer.

1. **Payment:** Payment shall be made by Buyer net 30 days from the date of delivery of the items purchased.
2. **Delivery:** Unless noted, delivery shall be F.O.B. Seller's location. Any delivery dates shown are approximate only and Seller shall have no liability for delays in delivery.
3. **Warranty:** Seller warrants that items shall be free from defects in workmanship for a period of 1 year from delivery to Buyer. This warranty comprises the sole and entire warranty. Seller makes no other warranty, guarantee, or representations of any kind whatsoever including merchantability and fitness purpose.
4. **Limitation of Remedy:** Seller's liability arising from or in any way connected with the items sold shall be limited exclusively to repair or replacement of the items sold, or refund of purchase price, at Seller's sole option. In no event shall seller be liable for any incidental, consequential or other damages of any kind or nature whatsoever.
5. **Order changes and cancellation:** Seller will promptly respond to Buyer request for order changes and cancellations as to minimize costs to Buyer. Buyer shall be responsible for Seller's cost and reasonable profit for order changes and cancellations. If an acceptable agreement cannot be reached, Seller shall complete items to original order and Buyer shall be responsible for original order purchase price.
6. **Return policy:** Seller will not accept returns without prior authorization. Returns are accepted within six months of sale. Only standard adapters that are active items in current demand will be considered for return for credit. Non-standard and custom items will not be accepted. All goods will be subject to reinspection. A 15% charge or the original purchase price will be incurred to cover reinspection, and restocking. Shipping costs will be at customer's expense.
7. **Entire Agreement:** These terms and conditions, unless modified in writing and accepted by Seller, shall represent the entire Agreement pertaining to the purchased items.



TABLE OF CONTENTS

Values & Fittings Catalog

How to use this table: Look by one end first in the following order NPT, then Medium Pressure, then High Pressure, then BSP, then JIC, and then Type M. Example: A Medium Pressure x NPT will be in the NPT section since NPT is first in this catalog.

NPT HEX CONNECTIONS		PAGE
NPT Male	X NPT Male	6
NPT Male	X NPT Female	7
NPT Female	X NPT Female	8
NPT Male	X Medium Pressure Male	8
NPT Male	X Medium Pressure Female	9
NPT Female	X Medium Pressure Male	10
NPT Female	X Medium Pressure Female	11
NPT Male	X High Pressure Male	11
NPT Male	X High Pressure Female	12
NPT Female	X High Pressure Male	12
NPT Female	X High Pressure Female	13
NPT Male	X BSP Male	13
NPT Female	X BSP Male	13
NPT Male	X JIC Male	14
NPT Female	X JIC Male	14
NPT Male	X Type M Male	15
NPT Female	X Type M Male	15

MEDIUM PRESSURE HEX CONNECTIONS		PAGE
Medium Male	X Medium Male	16
Medium Male	X Medium Female	16
Medium Female	X Medium Female	17
Medium Male	X High Pressure Male	17
Medium Male	X High Pressure Female	18
Medium Female	X High Pressure Male	18
Medium Female	X High Pressure Female	19
Medium Male	X BSP Male	19
Medium Male	X JIC Male	20
Medium Male	X Type M Male	20

HIGH PRESSURE HEX CONNECTIONS		PAGE
High Male	X High Male	21
High Male	X High Female	21
High Female	X High Female	21
High Male	X BSP Male	22
High Male	X JIC Male	22
High Male	X Type M Male	22

BSP HEX CONNECTIONS		PAGE
BSP Male	X BSP Male	23
BSP Male	X Type M Male	23

JIC HEX CONNECTIONS		PAGE
JIC Male	X JIC Male	24
JIC Male	X JIC Female	24
JIC Female	X JIC Female	24
JIC Male	X Type M Male	25
JIC Female	X Type M Male	25

TYPE M Male X Type M Male	25
CAPS	26
PLUGS	27
ROUND NIPPLES	28
SLIMLINE COUPLERS	29
ROUND ELBOWS	30
FLAT ELBOWS	30
ROUND TEES	31
FLAT TEES	31
ROUND CROSSES	32
FLAT CROSSES	32
MEDIUM PRESSURE GLAND NUTS	33
MEDIUM PRESSURE COLLARS	33
HIGH PRESSURE GLAND NUTS	33
HIGH PRESSURE COLLARS	33
QUICK COUPLERS	34-35
NEEDLE VALVES	36

NPT Male x NPT Male 5404-_N-_N



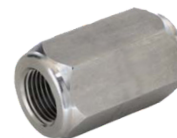
MALE	X	MALE	NOTE	PART NUMBER	MAWP	COMMENTS
1/16 npt male	X	1/16 npt male		5404-1N1N	15K PSI	
1/16 npt male	X	1/8 npt male		5404-1N2N	15K PSI	
1/8 npt male	X	1/8 npt male		5404-2N2N	15K PSI	
1/8 npt male	X	1/4 npt male		5404-2N4N	15K PSI	
1/8 npt male	X	3/8 npt male		5404-2N6N	15K PSI	
1/4 npt male	X	1/4 npt male		5404-4N4N	15K PSI	
1/4 npt male	X	1/4 npt male	3" long	5404-4N4N-3.0	15K PSI	
1/4 npt male	X	1/4 npt male	6" long	5404-4N4N-6.0	15K PSI	
1/4 npt male	X	3/8 npt male		5404-4N6N	15K PSI	
1/4 npt male	X	1/2 npt male		5404-4N8N	15K PSI	
1/4 npt male	X	3/4 npt male		5404-4N12N	10K PSI	
1/4 npt male	X	1" npt male		5404-4N16N	10K PSI	
3/8 npt male	X	3/8 npt male		5404-6N6N	15K PSI	
3/8 npt male	X	1/2 npt male		5404-6N8N	15K PSI	
3/8 npt male	X	3/4 npt male		5404-6N12N	10K PSI	
3/8 npt male	X	1" npt male		5404-6N16N	10K PSI	
1/2 npt male	X	1/2 npt male		5404-8N8N	15K PSI	
1/2 npt male	X	1/2 npt male	3" long	5404-8N8N-3.0	15K PSI	
1/2 npt male	X	1/2 npt male	4" long	5404-8N8N-4.0	15K PSI	
1/2 npt male	X	1/2 npt male	6" long	5404-8N8N-6.0	15K PSI	
1/2 npt male	X	3/4 npt male		5404-8N12N	10K PSI	
1/2 npt male	X	1" npt male		5404-8N16N	10K PSI	
3/4 npt male	X	3/4 npt male		5404-12N12N	10K PSI	
3/4 npt male	X	1" npt male		5404-12N16N	10K PSI	
1" npt male	X	1" npt male		5404-16N16N	10K PSI	
1" npt male	X	1-1/4" npt male		5404-16N20N	7.5K PSI	
1" npt male	X	1-1/2" npt male		5404-16N24N	7.5K PSI	
1" npt male	X	2" npt male		5404-16N32N	7.5K PSI	

NPT Female x NPT Male 5406-_N_ N



FEMALE	X	MALE	NOTE	PART NUMBER	MAWP	COMMENTS
1/8 npt female	X	1/16 npt male		5406-2N1N	15K PSI	
1/4 npt female	X	1/16 npt male		5406-4N1N	15K PSI	
1/16 npt female	X	1/8 npt male		5406-1N2N	15K PSI	
1/4 npt female	X	1/8 npt male		5406-4N2N	15K PSI	
3/8 npt female	X	1/8 npt male		5406-6N2N	15K PSI	
1/16 npt female	X	1/4 npt male		5406-1N4N	15K PSI	
1/8 npt female	X	1/4 npt male		5406-2N4N	15K PSI	
1/4 npt female	X	1/4 npt male		5406-4N4N	15K PSI	
3/8 npt female	X	1/4 npt male		5406-6N4N	15K PSI	
1/2 npt female	X	1/4 npt male		5406-8N4N	15K PSI	
3/4 npt female	X	1/4 npt male		5406-12N4N	10K PSI	
1/16 npt female	X	3/8 npt male		5406-1N6N	15K PSI	
1/8 npt female	X	3/8 npt male		5406-2N6N	15K PSI	
1/4 npt female	X	3/8 npt male		5406-4N6N	15K PSI	
3/8 npt female	X	3/8 npt male		5406-6N6N	15K PSI	
1/2 npt female	X	3/8 npt male		5406-8N6N	15K PSI	
3/4 npt female	X	3/8 npt male		5406-12N6N	10K PSI	
1" npt female	X	3/8 npt male		5406-16N6N	10K PSI	
1/16 npt female	X	1/2 npt male		5406-1N8N	15K PSI	
1/8 npt female	X	1/2 npt male		5406-2N8N	15K PSI	
1/4 npt female	X	1/2 npt male		5406-4N8N	15K PSI	
3/8 npt female	X	1/2 npt male		5406-6N8N	15K PSI	
1/2 npt female	X	1/2 npt male		5406-8N8N	15K PSI	
3/4 npt female	X	1/2 npt male		5406-12N8N	10K PSI	
1" npt female	X	1/2 npt male		5406-16N8N	10K PSI	
1/4 npt female	X	3/4 npt male		5406-4N12N	10K PSI	
3/8 npt female	X	3/4 npt male		5406-6N12N	10K PSI	
1/2 npt female	X	3/4 npt male		5406-8N12N	10K PSI	
3/4 npt female	X	3/4 npt male		5406-12N12N	10K PSI	
1" npt female	X	3/4 npt male		5406-16N12N	10K PSI	
1/4 npt female	X	1" npt male		5406-4N16N	10K PSI	
3/8 npt female	X	1" npt male		5406-6N16N	10K PSI	
1/2 npt female	X	1" npt male		5406-8N16N	10K PSI	
3/4 npt female	X	1" npt male		5406-12N16N	10K PSI	
1" npt female	X	2" npt male		5406-16N32N	7.5K PSI	

NPT Female x NPT Female 5000-_N_N



FEMALE	X	FEMALE	NOTE	PART NUMBER	MAWP	COMMENTS
1/16 npt female	X	1/4 npt female		5000-1N4N	15K PSI	
1/16 npt female	X	1/2 npt female		5000-1N8N	15K PSI	
1/8 npt female	X	1/8 npt female		5000-2N2N	15K PSI	
1/8 npt female	X	1/4 npt female		5000-2N4N	15K PSI	
1/8 npt female	X	3/8 npt female		5000-2N6N	15K PSI	
1/8 npt female	X	1/2 npt female		5000-1N8N	15K PSI	
1/4 npt female	X	1/4 npt female		5000-4N4N	15K PSI	
1/4 npt female	X	3/8 npt female		5000-4N6N	15K PSI	
1/4 npt female	X	1/2 npt female		5000-4N8N	15K PSI	
1/4 npt female	X	3/4 npt female		5000-4N12N	10K PSI	
3/8 npt female	X	3/8 npt female		5000-6N6N	15K PSI	
3/8 npt female	X	1/2 npt female		5000-6N8N	15K PSI	
3/8 npt female	X	3/4 npt female		5000-6N12N	10K PSI	
3/8 npt female	X	1" npt female		5000-6N16N	10K PSI	
1/2 npt female	X	1/2 npt female		5000-8N8N	15K PSI	
1/2 npt female	X	3/4 npt female		5000-8N12N	10K PSI	
1/2 npt female	X	1" npt female		5000-8N16N	10K PSI	
3/4 npt female	X	3/4 npt female		5000-12N12N	10K PSI	
3/4 npt female	X	1" npt female		5000-12N16N	10K PSI	
1" npt female	X	1" npt female		5000-16N16N	10K PSI	

NPT Male x Medium Pressure Male 5404-_N_M



MALE	X	MALE	NOTE	PART NUMBER	MAWP	COMMENTS
1/4 npt male	X	1/4 mp male		5404-4N4M	15K PSI	
1/4 npt male	X	3/8 mp male		5404-4N6M	15K PSI	
1/4 npt male	X	9/16 mp male		5404-4N9M	15K PSI	
1/4 npt male	X	3/4 mp male		5404-4N12M	15K PSI	
1/4 npt male	X	1" mp male		5404-4N16M	15K PSI	
3/8 npt male	X	1/4 mp male		5404-6N4M	15K PSI	
3/8 npt male	X	3/8 mp male		5404-6N6M	15K PSI	
3/8 npt male	X	9/16 mp male		5404-6N9M	15K PSI	
3/8 npt male	X	3/4 mp male		5404-6N12M	15K PSI	
3/8 npt male	X	1" mp male		5404-6N16M	15K PSI	
1/2 npt male	X	1/4 mp male		5404-8N4M	15K PSI	
1/2 npt male	X	3/8 mp male		5404-8N6M	15K PSI	
1/2 npt male	X	9/16 mp male		5404-8N9M	15K PSI	
1/2 npt male	X	3/4 mp male		5404-8N12M	15K PSI	
1/2 npt male	X	1" mp male		5404-8N16M	15K PSI	
3/4 npt male	X	9/16 mp male		5404-12N9M	10K PSI	
3/4 npt male	X	3/4 mp male		5404-12N12M	10K PSI	
3/4 npt male	X	1" mp male		5404-12N16M	10K PSI	
1" npt male	X	9/16 mp male		5404-16N9M	10K PSI	
1" npt male	X	3/4 mp male		5404-16N12M	10K PSI	
1" npt male	X	1" mp male		5404-16N16M	10K PSI	

NPT Male x Medium Pressure Female 5406-_M_N



MALE	X	FEMALE	NOTE	PART NUMBER	MAWP	COMMENTS
1/8 npt male	X	1/4 mp female		5406-4M2N	15K PSI	
1/4 npt male	X	1/4 mp female		5406-4M4N	15K PSI	
1/4 npt male	X	3/8 mp female		5406-6M4N	15K PSI	
1/4 npt male	X	9/16 mp female		5406-9M4N	15K PSI	
1/4 npt male	X	3/4 mp female		5406-12M4N	15K PSI	
1/4 npt male	X	1" mp female		5406-16M4N	15K PSI	
3/8 npt male	X	1/4 mp female		5406-4M6N	15K PSI	
3/8 npt male	X	3/8 mp female		5406-6M6N	15K PSI	
3/8 npt male	X	9/16 mp female		5406-9M6N	15K PSI	
3/8 npt male	X	3/4 mp female		5406-12M6N	15K PSI	
3/8 npt male	X	1" mp female		5406-16M6N	15K PSI	
1/2 npt male	X	1/4 mp female		5406-4M8N	15K PSI	
1/2 npt male	X	3/8 mp female		5406-6M8N	15K PSI	
1/2 npt male	X	9/16 mp female		5406-9M8N	15K PSI	
1/2 npt male	X	3/4 mp female		5406-12M8N	15K PSI	
1/2 npt male	X	1" mp female		5406-16M8N	15K PSI	
3/4 npt male	X	1/4 mp female		5406-4M12N	15K PSI	
3/4 npt male	X	3/8 mp female		5406-6M12N	10K PSI	
3/4 npt male	X	9/16 mp female		5406-9M12N	10K PSI	
3/4 npt male	X	3/4 mp female		5406-12M12N	10K PSI	
3/4 npt male	X	1" mp female		5406-16M12N	10K PSI	
1" npt male	X	3/8 mp female		5406-6M16N	10K PSI	
1" npt male	X	9/16 mp female		5406-9M16N	10K PSI	
1" npt male	X	3/4 mp female		5406-12M16N	10K PSI	
1" npt male	X	1" mp female		5406-16M16N	10K PSI	

NPT Female x Medium Pressure Male 5406-_N_M



FEMALE	X	MALE	NOTE	PART NUMBER	MAWP	COMMENTS
1/16 npt female	X	9/16 mp male		5406-1N9M	15K PSI	
1/8 npt female	X	1/4 mp male		5406-2N4M	15K PSI	
1/8 npt female	X	3/8 mp male		5406-2N6M	15K PSI	
1/8 npt female	X	9/16 mp male		5406-2N9M	15K PSI	
1/8 npt female	X	3/4 mp male		5406-2N12M	15K PSI	
1/4 npt female	X	1/4 mp male		5406-4N4M	15K PSI	
1/4 npt female	X	3/8 mp male		5406-4N6M	15K PSI	
1/4 npt female	X	9/16 mp male		5406-4N9M	15K PSI	
1/4 npt female	X	3/4 mp male		5406-4N12M	15K PSI	
1/4 npt female	X	1" mp male		5406-4N16M	15K PSI	
3/8 npt female	X	1/4 mp male		5406-6N4M	15K PSI	
3/8 npt female	X	3/8 mp male		5406-6N6M	15K PSI	
3/8 npt female	X	9/16 mp male		5406-6N9M	15K PSI	
3/8 npt female	X	3/4 mp male		5406-6N12M	15K PSI	
3/8 npt female	X	1" mp male		5406-6N16M	15K PSI	
1/2 npt female	X	1/4 mp male		5406-8N4M	15K PSI	
1/2 npt female	X	3/8 mp male		5406-8N6M	15K PSI	
1/2 npt female	X	9/16 mp male		5406-8N9M	15K PSI	
1/2 npt female	X	3/4 mp male		5406-8N12M	15K PSI	
1/2 npt female	X	1" mp male		5406-8N16M	15K PSI	
3/4 npt female	X	3/8 mp male		5406-12N6M	10K PSI	
3/4 npt female	X	9/16 mp male		5406-12N9M	10K PSI	
3/4 npt female	X	3/4 mp male		5406-12N12M	10K PSI	
3/4 npt female	X	1" mp male		5406-12N16M	10K PSI	
1" npt female	X	3/8 mp male		5406-16N6M	10K PSI	
1" npt female	X	9/16 mp male		5406-16N9M	10K PSI	
1" npt female	X	3/4 mp male		5406-16N12M	10K PSI	
1" npt female	X	1" mp male		5406-16N16M	10K PSI	

NPT Female x Medium Pressure Female 5000-_N_M



FEMALE	X	FEMALE	NOTE	PART NUMBER	MAWP	COMMENTS
1/8 npt female	X	1/4 mp female		5000-2N4M	15K PSI	
1/8 npt female	X	3/8 mp female		5000-2N6M	15K PSI	
1/8 npt female	X	9/16 mp female		5000-2N9M	15K PSI	
1/4 npt female	X	1/4 mp female		5000-4N4M	15K PSI	
1/4 npt female	X	3/8 mp female		5000-4N6M	15K PSI	
1/4 npt female	X	9/16 mp female		5000-4N9M	15K PSI	
3/8 npt female	X	1/4 mp female		5000-6N4M	15K PSI	
3/8 npt female	X	3/8 mp female		5000-6N6M	15K PSI	
3/8 npt female	X	9/16 mp female		5000-6N9M	15K PSI	
1/2 npt female	X	1/4 mp female		5000-8N4M	15K PSI	
1/2 npt female	X	3/8 mp female		5000-8N6M	15K PSI	
1/2 npt female	X	9/16 mp female		5000-8N9M	15K PSI	
1/2 npt female	X	3/4 mp female		5000-8N12M	15K PSI	
3/4 npt female	X	3/8 mp female		5000-12N6M	10K PSI	
3/4 npt female	X	9/16 mp female		5000-12N9M	10K PSI	
3/4 npt female	X	3/4 mp female		5000-12N12M	10K PSI	
3/4 npt female	X	1" mp female		5000-12N16M	10K PSI	
1" npt female	X	3/8 mp female		5000-16N6M	10K PSI	
1" npt female	X	9/16 mp female		5000-16N9M	10K PSI	
1" npt female	X	3/4 mp female		5000-16N12M	10K PSI	
1" npt female	X	1" mp female		5000-16N16M	10K PSI	

NPT Male x High Pressure Male 5404-_N_H



MALE	X	MALE	NOTE	PART NUMBER	MAWP	COMMENTS
1/4 npt male	X	1/4 hp male		5404-4N4H	15K PSI	
1/4 npt male	X	3/8 hp male		5404-6N6H	15K PSI	
1/4 npt male	X	9/16 hp male		5404-4N9H	15K PSI	
3/8 npt male	X	1/4 hp male		5404-6N4H	15K PSI	
3/8 npt male	X	3/8 hp male		5404-6N6H	15K PSI	
3/8 npt male	X	9/16 hp male		5404-6N9H	15K PSI	
1/2 npt male	X	1/4 hp male		5404-8N4H	15K PSI	
1/2 npt male	X	3/8 hp male		5404-8N6H	15K PSI	
1/2 npt male	X	9/16 hp male		5404-8N9H	15K PSI	
3/4 npt male	X	1/4 hp male		5404-12N4H	10K PSI	
3/4 npt male	X	3/8 hp male		5404-12N6H	10K PSI	
3/4 npt male	X	9/16 hp male		5404-12N9H	10K PSI	
1" npt male	X	9/16 hp male		5404-16N9H	10K PSI	

NPT Male x High Pressure Female 5406-_H_N



MALE	X	FEMALE	NOTE	PART NUMBER	MAWP	COMMENTS
1/16 npt male	X	3/8 hp female		5406-6H1N	15K PSI	
1/8 npt male	X	1/4 hp female		5406-4H2N	15K PSI	
1/8 npt male	X	3/8 hp female		5406-6H2N	15K PSI	
1/4 npt male	X	1/4 hp female		5406-4H4N	15K PSI	
1/4 npt male	X	3/8 hp female		5406-6H4N	15K PSI	
1/4 npt male	X	9/16 hp female		5406-9H4N	15K PSI	
3/8 npt male	X	1/4 hp female		5406-4H6N	15K PSI	
3/8 npt male	X	3/8 hp female		5406-6H6N	15K PSI	
3/8 npt male	X	9/16 hp female		5406-9H6N	15K PSI	
1/2 npt male	X	1/4 hp female		5406-4H8N	15K PSI	
1/2 npt male	X	3/8 hp female		5406-6H8N	15K PSI	
1/2 npt male	X	9/16 hp female		5406-9H8N	15K PSI	
3/4 npt male	X	1/4 hp female		5406-4H12N	10K PSI	
3/4 npt male	X	3/8 hp female		5406-6H12N	10K PSI	
3/4 npt male	X	9/16 hp female		5406-9H12N	10K PSI	
1" npt male	X	1/4 hp female		5406-4H16N	10K PSI	
1" npt male	X	3/8 hp female		5406-6H16N	10K PSI	
1" npt male	X	9/16 hp female		5406-9H16N	10K PSI	

NPT Female x High Pressure Male 5406-_N_H



FEMALE	X	MALE	NOTE	PART NUMBER	MAWP	COMMENTS
1/16 npt female	X	3/8 hp male		5406-1N6H	15K PSI	
1/8 npt female	X	1/4 hp male		5406-2N4H	15K PSI	
1/8 npt female	X	3/8 hp male		5406-2N6H	15K PSI	
1/8 npt female	X	9/16 hp male		5406-2N9H	15K PSI	
1/4 npt female	X	1/4 hp male		5406-4N4H	15K PSI	
1/4 npt female	X	3/8 hp male		5406-4N6H	15K PSI	
1/4 npt female	X	9/16 hp male		5406-4N9H	15K PSI	
3/8 npt female	X	1/4 hp male		5406-6N4H	15K PSI	
3/8 npt female	X	3/8 hp male		5406-6N6H	15K PSI	
3/8 npt female	X	9/16 hp male		5406-6N9H	15K PSI	
1/2 npt female	X	1/4 hp male		5406-8N4H	15K PSI	
1/2 npt female	X	3/8 hp male		5406-8N6H	15K PSI	
1/2 npt female	X	9/16 hp male		5406-8N9H	15K PSI	
3/4 npt female	X	3/8 hp male		5406-12N6H	10K PSI	
3/4 npt female	X	9/16 hp male		5406-12N9H	10K PSI	
1" npt female	X	9/16 hp male		5406-16N9H	10K PSI	

NPT Female x High Pressure Female 5000-_N_H



FEMALE	X	FEMALE	NOTE	PART NUMBER	MAWP	COMMENTS
1/4 npt female	X	1/4 hp female		5000-4N4H	15K PSI	
1/4 npt female	X	3/8 hp female		5000-6N4H	15K PSI	
1/4 npt female	X	9/16 hp female		5000-4N9H	15K PSI	
3/8 npt female	X	1/4 hp female		5000-6N4H	15K PSI	
3/8 npt female	X	3/8 hp female		5000-6N6H	15K PSI	
3/8 npt female	X	9/16 hp female		5000-6N9H	15K PSI	
1/2 npt female	X	1/4 hp female		5000-8N4H	15K PSI	
1/2 npt female	X	3/8 hp female		5000-8N6H	15K PSI	
1/2 npt female	X	9/16 hp female		5000-8N9H	15K PSI	
3/4 npt female	X	1/4 hp female		5000-12N4H	10K PSI	
3/4 npt female	X	3/8 hp female		5000-12N6H	10K PSI	
3/4 npt female	X	9/16 hp female		5000-12N9H	10K PSI	
1" npt female	X	1/4 hp female		5000-16N4H	10K PSI	
1" npt female	X	3/8 hp female		5000-16N6H	10K PSI	
1" npt female	X	9/16 hp female		5000-16N9H	10K PSI	

NPT Male x BSP Male 5404-_N_B



FEMALE	X	FEMALE	NOTE	PART NUMBER	MAWP	COMMENTS
1/4 npt male	X	1/4 bsp int male	internal cone	5404-4N4B	15K PSI	
3/8 npt male	X	3/8 bsp int male	internal cone	5404-6N6B	15K PSI	
1/2 npt male	X	1/4 bsp int male	internal cone	5404-8N4B	15K PSI	
1/2 npt male	X	3/8 bsp int male	internal cone	5404-8N6B	15K PSI	
1/2 npt male	X	1/2 bsp int male	internal cone	5404-8N8B	15K PSI	
1" npt male	X	3/8 bsp int male	internal cone	5404-16N6B	10K PSI	

NPT Female x BSP Male 5406-_N_B



FEMALE	X	MALE	NOTE	PART NUMBER	MAWP	COMMENTS
1/4 npt female	X	1/4 bsp int male	internal cone	5406-4N4B	15K PSI	
3/8 npt female	X	3/8 bsp int male	internal cone	5406-6N6B	15K PSI	
1/2 npt female	X	1/2 bsp int male	internal cone	5406-8N8B	15K PSI	

NPT Male x JIC Male 5404-_N_J



MALE	X	MALE	NOTE	PART NUMBER	MAWP	COMMENTS
1/8 npt male	X	1/4 jic male		5404-2N4J	10K PSI	
1/4 npt male	X	1/4 jic male		5404-4N4J	10K PSI	
1/4 npt male	X	3/8 jic male		5404-4N6J	10K PSI	
1/4 npt male	X	1/2 jic male		5404-4N8J	10K PSI	
3/8 npt male	X	1/4 jic male		5404-6N4J	10K PSI	
3/8 npt male	X	3/8 jic male		5404-6N6J	10K PSI	
3/8 npt male	X	1/2 jic male		5404-6N8J	10K PSI	
1/2 npt male	X	1/4 jic male		5404-8N4J	10K PSI	
1/2 npt male	X	3/8 jic male		5404-8N6J	10K PSI	
1/2 npt male	X	1/2 jic male		5404-8N8J	10K PSI	
3/4 npt male	X	3/8 jic male		5404-12N6J	10K PSI	
3/4 npt male	X	1/2 jic male		5404-12N8J	10K PSI	
3/4 npt male	X	3/4 jic male		5404-12N12J	10K PSI	
3/4 npt male	X	1" jic male		5404-12N16J	10K PSI	
1" npt male	X	1/2 jic male		5404-16N8J	10K PSI	
1" npt male	X	3/4 jic male		5404-16N12J	10K PSI	
1" npt male	X	1" jic male		5404-16N16J	10K PSI	

NPT Female x JIC Male 5406-_N_J



FEMALE	X	MALE	NOTE	PART NUMBER	MAWP	COMMENTS
1/4 npt female	X	1/4 jic male		5406-4N4J	10K PSI	
1/4 npt female	X	3/8 jic male		5406-4N6J	10K PSI	
1/4 npt female	X	1/2 jic male		5406-4N8J	10K PSI	
3/8 npt female	X	1/4 jic male		5406-6N4J	10K PSI	
3/8 npt female	X	3/8 jic male		5406-6N6J	10K PSI	
3/8 npt female	X	1/2 jic male		5406-6N8J	10K PSI	
1/2 npt female	X	1/4 jic male		5406-8N4J	10K PSI	
1/2 npt female	X	3/8 jic male		5406-8N6J	10K PSI	
1/2 npt female	X	1/2 jic male		5406-8N8J	10K PSI	
1/2 npt female	X	3/4 jic male		5406-8N12J	10K PSI	
3/4 npt female	X	1/2 jic male		5406-12N8J	10K PSI	
3/4 npt female	X	3/4 jic male		5406-12N12J	10K PSI	
1" npt female	X	1" jic male		5406-16N16J	10K PSI	

NPT Male x Type M Male 5404-_NM_



MALE	X	MALE	NOTE	PART NUMBER	MAWP	COMMENTS
1/8 npt male	X	9/16 tm male		5404-2NM9	15K PSI	
1/4 npt male	X	9/16 tm male		5404-4NM9	15K PSI	
1/4 npt male	X	3/4 tm male		5404-4NM12	15K PSI	
1/4 npt male	X	1" tm male		5404-4NM16	15K PSI	
3/8 npt male	X	9/16 tm male		5404-6NM9	15K PSI	
3/8 npt male	X	3/4 tm male		5404-6NM12	15K PSI	
3/8 npt male	X	1" tm male		5404-6NM16	15K PSI	
1/2 npt male	X	9/16 tm male		5404-8NM9	15K PSI	
1/2 npt male	X	3/4 tm male		5404-8NM12	15K PSI	
1/2 npt male	X	1" tm male		5404-8NM16	15K PSI	
1/2 npt male	X	1-5/16" tm male		5404-8NM21	15K PSI	
3/4 npt male	X	9/16 tm male		5404-12NM9	10K PSI	
3/4 npt male	X	3/4 tm male		5404-12NM12	10K PSI	
3/4 npt male	X	1" tm male		5404-12NM16	10K PSI	
3/4 npt male	X	1-5/16" tm male		5404-12NM21	10K PSI	
1" npt male	X	9/16 tm male		5404-16NM9	10K PSI	
1" npt male	X	3/4 tm male		5404-16NM12	10K PSI	
1" npt male	X	1" tm male		5404-16NM16	10K PSI	
1" npt male	X	1-5/16" tm male		5404-16NM21	10K PSI	
1-1/4" npt male	X	1" tm male		5404-20NM16	7.5K PSI	
1-1/4" npt male	X	1-5/16" tm male		5404-20NM21	7.5K PSI	
1-1/2" npt male	X	9/16 tm male		5404-24NM9	7.5K PSI	
1-1/2" npt male	X	3/4 tm male		5404-24NM12	7.5K PSI	
2" npt male	X	1" tm male		5404-32NM16	7.5K PSI	
2" npt male	X	1-5/16" tm male		5404-32NM21	7.5K PSI	

NPT Female x Type M Male 5406-_NM_



FEMALE	X	MALE	NOTE	PART NUMBER	MAWP	COMMENTS
1/4 npt female	X	9/16 tm male		5406-4NM9	15K PSI	
1/4 npt female	X	3/4 tm male		5406-4NM12	15K PSI	
3/8 npt female	X	9/16 tm male		5406-6NM9	15K PSI	
3/8 npt female	X	3/4 tm male		5406-6NM12	15K PSI	
3/8 npt female	X	1" tm male		5406-6NM16	15K PSI	
1/2 npt female	X	9/16 tm male		5406-8NM9	15K PSI	
1/2 npt female	X	3/4 tm male		5406-8NM12	15K PSI	
1/2 npt female	X	1" tm male		5406-8NM16	15K PSI	
3/4 npt female	X	9/16 tm male		5406-12NM9	10K PSI	
3/4 npt female	X	3/4 tm male		5406-12NM12	10K PSI	
3/4 npt female	X	1" tm male		5406-12NM16	10K PSI	
1" npt female	X	9/16 tm male		5406-16NM9	10K PSI	
1" npt female	X	3/4 tm male		5406-16NM12	10K PSI	
1" npt female	X	1" tm male		5406-16NM16	10K PSI	
1" npt female	X	1-5/16" tm male		5406-16NM21	10K PSI	

Medium Pressure Male x Medium Pressure Male 5404-_M_M



MALE	X	MALE	NOTE	PART NUMBER	MAWP	COMMENTS
1/4 mp male	X	1/4 mp male		5404-4M4M	20K PSI	
1/4 mp male	X	3/8 mp male		5404-4M6M	20K PSI	
1/4 mp male	X	9/16 mp male		5404-4M9M	20K PSI	
1/4 mp male	X	3/4 mp male		5404-4M12M	20K PSI	
1/4 mp male	X	1" mp male		5404-4M16M	20K PSI	
3/8 mp male	X	3/8 mp male		5404-6M6M	20K PSI	
3/8 mp male	X	9/16 mp male		5404-6M9M	20K PSI	
3/8 mp male	X	3/4 mp male		5404-6M12M	20K PSI	
3/8 mp male	X	1" mp male		5404-6M16M	20K PSI	
9/16 mp male	X	9/16 mp male		5404-9M9M	20K PSI	
9/16 mp male	X	3/4 mp male		5404-9M12M	20K PSI	
9/16 mp male	X	1" mp male		5404-9M16M	20K PSI	
3/4 mp male	X	3/4 mp male		5404-12M12M	20K PSI	
3/4 mp male	X	1" mp male		5404-12M16M	20K PSI	
1" mp male	X	1" mp male		5404-16M16M	20K PSI	

Medium Pressure Male x Medium Pressure Female 5406-_M_M



MALE	X	FEMALE	NOTE	PART NUMBER	MAWP	COMMENTS
1/4 mp male	X	3/8 mp female		5406-6M4M	20K PSI	
1/4 mp male	X	9/16 mp female		5406-9M4M	20K PSI	
1/4 mp male	X	3/4 mp female		5406-12M4M	20K PSI	
1/4 mp male	X	1" mp female		5406-16M4M	20K PSI	
3/8 mp male	X	1/4 mp female		5406-4M6M	20K PSI	
3/8 mp male	X	9/16 mp female		5406-9M6M	20K PSI	
3/8 mp male	X	3/4 mp female		5406-12M6M	20K PSI	
3/8 mp male	X	1" mp female		5406-16M6M	20K PSI	
9/16 mp male	X	1/4 mp female		5406-4M9M	20K PSI	
9/16 mp male	X	3/8 mp female		5406-6M9M	20K PSI	
9/16 mp male	X	3/4 mp female		5406-12M9M	20K PSI	
9/16 mp male	X	1" mp female		5406-16M9M	20K PSI	
3/4 mp male	X	1/4 mp female		5406-4M12M	20K PSI	
3/4 mp male	X	3/8 mp female		5406-6M12M	20K PSI	
3/4 mp male	X	9/16 mp female		5406-12M12M	20K PSI	
3/4 mp male	X	1" mp female		5406-12M16M	20K PSI	
1" mp male	X	1/4 mp female		5406-4M16M	20K PSI	
1" mp male	X	3/8 mp female		5406-6M16M	20K PSI	
1" mp male	X	9/16 mp female		5406-9M16M	20K PSI	
1" mp male	X	3/4 mp female		5406-12M16M	20K PSI	

Medium Pressure Female x Medium Pressure Female 5000-_M_M



FEMALE	X	FEMALE	NOTE	PART NUMBER	MAWP	COMMENTS
1/4 mp female	X	1/4 mp female		5000-4M4M	20K PSI	
1/4 mp female	X	3/8 mp female		5000-4M6M	20K PSI	
1/4 mp female	X	9/16 mp female		5000-4M9M	20K PSI	
1/4 mp female	X	3/4 mp female		5000-4M12M	20K PSI	
1/4 mp female	X	1" mp female		5000-4M16M	20K PSI	
3/8 mp female	X	3/8 mp female		5000-6M6M	20K PSI	
3/8 mp female	X	9/16 mp female		5000-6M9M	20K PSI	
3/8 mp female	X	3/4 mp female		5000-6M12M	20K PSI	
3/8 mp female	X	1" mp female		5000-6M16M	20K PSI	
9/16 mp female	X	9/16 mp female		5000-9M9M	20K PSI	
9/16 mp female	X	3/4 mp female		5000-9M12M	20K PSI	
9/16 mp female	X	1" mp female		5000-9M16M	20K PSI	
3/4 mp female	X	3/4 mp female		5000-12M12M	20K PSI	
3/4 mp female	X	1" mp female		5000-12M16M	20K PSI	
1" mp female	X	1" mp female		5000-16M16M	20K PSI	

Medium Pressure Male x High Pressure Male 5404-_M_H



MALE	X	MALE	NOTE	PART NUMBER	MAWP	COMMENTS
1/4 mp male	X	1/4 hp male		5404-4M4H	20K PSI	
1/4 mp male	X	3/8 hp male		5404-4M6H	20K PSI	
1/4 mp male	X	9/16 hp male		5404-4M9H	20K PSI	
3/8 mp male	X	1/4 hp male		5404-6M4H	20K PSI	
3/8 mp male	X	3/8 hp male		5404-6M6H	20K PSI	
3/8 mp male	X	9/16 hp male		5404-6M9H	20K PSI	
9/16 mp male	X	1/4 hp male		5404-9M4H	20K PSI	
9/16 mp male	X	3/8 hp male		5404-9M6H	20K PSI	
9/16 mp male	X	9/16 hp male		5404-9M9H	20K PSI	
3/4 mp male	X	1/4 hp male		5404-12M4H	20K PSI	
3/4 mp male	X	3/8 hp male		5404-12M6H	20K PSI	
3/4 mp male	X	9/16 hp male		5404-12M9H	20K PSI	
1" mp male	X	1/4 hp male		5404-16M4H	20K PSI	
1" mp male	X	3/8 hp male		5404-16M6H	20K PSI	
1" mp male	X	9/16 hp male		5404-16M9H	20K PSI	

Medium Pressure Male x High Pressure Female 5406-_H_M



MALE	X	FEMALE	NOTE	PART NUMBER	MAWP	COMMENTS
1/4 mp male	X	1/4 hp female		5406-4H4M	20K PSI	
1/4 mp male	X	3/8 hp female		5406-6H4M	20K PSI	
1/4 mp male	X	9/16 hp female		5406-9H4M	20K PSI	
3/8 mp male	X	1/4 hp female		5406-4H6M	20K PSI	
3/8 mp male	X	3/8 hp female		5406-6H6M	20K PSI	
3/8 mp male	X	9/16 hp female		5406-6H9M	20K PSI	
9/16 mp male	X	1/4 hp female		5406-4H9M	20K PSI	
9/16 mp male	X	3/8 hp female		5406-6H9M	20K PSI	
9/16 mp male	X	9/16 hp female		5406-9H9M	20K PSI	
3/4 mp male	X	1/4 hp female		5406-4H12M	20K PSI	
3/4 mp male	X	3/8 hp female		5406-6H12M	20K PSI	
3/4 mp male	X	9/16 hp female		5406-9H12M	20K PSI	
1" mp male	X	1/4 hp female		5406-4H16M	20K PSI	
1" mp male	X	3/8 hp female		5406-6H16M	20K PSI	
1" mp male	X	9/16 hp female		5406-9H16M	20K PSI	

Medium Pressure Female x High Pressure Male 5406-_M_H



FEMALE	X	MALE	NOTE	PART NUMBER	MAWP	COMMENTS
1/4 mp female	X	1/4 hp male		5406-4M4H	20K PSI	
1/4 mp female	X	3/8 hp male		5406-4M6H	20K PSI	
1/4 mp female	X	9/16 hp male		5406-4M9H	20K PSI	
3/8 mp female	X	1/4 hp male		5406-6M4H	20K PSI	
3/8 mp female	X	3/8 hp male		5406-6M6H	20K PSI	
3/8 mp female	X	9/16 hp male		5406-6M9H	20K PSI	
9/16 mp female	X	1/4 hp male		5406-9M4H	20K PSI	
9/16 mp female	X	3/8 hp male		5406-9M6H	20K PSI	
9/16 mp female	X	9/16 hp male		5406-9M9H	20K PSI	
3/4 mp female	X	1/4 hp male		5406-12M4H	20K PSI	
3/4 mp female	X	3/8 hp male		5406-12M6H	20K PSI	
3/4 mp female	X	9/16 hp male		5406-12M9H	20K PSI	
1" mp female	X	1/4 hp male		5406-16M4H	20K PSI	
1" mp female	X	3/8 hp male		5406-16M6H	20K PSI	
1" mp female	X	9/16 hp male		5406-16M9H	20K PSI	

Medium Pressure Female x High Pressure Female 5000-_M_H



FEMALE	X	FEMALE	NOTE	PART NUMBER	MAWP	COMMENTS
1/4 mp female	X	1/4 hp female		5000-4M4H	20K PSI	
1/4 mp female	X	3/8 hp female		5000-4M6H	20K PSI	
1/4 mp female	X	9/16 hp female		5000-4M9H	20K PSI	
3/8 mp female	X	1/4 hp female		5000-6M4H	20K PSI	
3/8 mp female	X	3/8 hp female		5000-6M6H	20K PSI	
3/8 mp female	X	9/16 hp female		5000-6M9H	20K PSI	
9/16 mp female	X	1/4 hp female		5000-9M4H	20K PSI	
9/16 mp female	X	3/8 hp female		5000-9M6H	20K PSI	
9/16 mp female	X	9/16 hp female		5000-9M9H	20K PSI	
3/4 mp female	X	1/4 hp female		5000-12M4H	20K PSI	
3/4 mp female	X	3/8 hp female		5000-12M6H	20K PSI	
3/4 mp female	X	9/16 hp female		5000-12M9H	20K PSI	
1" mp female	X	1/4 hp female		5000-16M4H	20K PSI	
1" mp female	X	3/8 hp female		5000-16M6H	20K PSI	
1" mp female	X	9/16 hp female		5000-16M9H	20K PSI	

Medium Pressure Male x BSP Male 5404-_M_B



MALE	X	MALE	NOTE	PART NUMBER	MAWP	COMMENTS
1/4 mp male	X	1/4 bsp int male		5404-4M4B	20K PSI	
3/8 mp male	X	1/4 bsp int male		5404-6M4B	20K PSI	
3/8 mp male	X	3/8 bsp int male		5404-6M6B	20K PSI	
9/16 mp male	X	1/4 bsp int male		5404-9M4B	20K PSI	
9/16 mp male	X	3/8 bsp int male		5404-9M6B	20K PSI	
9/16 mp male	X	1/2 bsp int male		5404-9M8B	20K PSI	
1/4 mp male	X	1/4 bsp ext male		5404-4M4BE	20K PSI	

Medium Pressure Male x JIC Male 5404-_M_J



MALE	X	MALE	NOTE	PART NUMBER	MAWP	COMMENTS
1/4 mp male	X	1/4 jic male		5404-4M4J	10K PSI	
1/4 mp male	X	3/8 jic male		5404-4M6J	10K PSI	
1/4 mp male	X	1/2 jic male		5404-4J8J	10K PSI	
3/8 mp male	X	1/4 jic male		5404-6M4J	10K PSI	
3/8 mp male	X	3/8 jic male		5404-6M6J	10K PSI	
3/8 mp male	X	1/2 jic male		5404-6M8J	10K PSI	
9/16 mp male	X	1/4 jic male		5404-9M4J	10K PSI	
9/16 mp male	X	3/8 jic male		5404-9M6J	10K PSI	
9/16 mp male	X	1/2 jic male		5404-9M8J	10K PSI	
9/16 mp male	X	5/8 jic male		5404-9M10J	10K PSI	
9/16 mp male	X	3/4 jic male		5404-9M12J	10K PSI	
9/16 mp male	X	1" jic male		5404-9M16J	10K PSI	
3/4 mp male	X	3/8 jic male		5404-12M6J	10K PSI	
3/4 mp male	X	1/2 jic male		5404-12M8J	10K PSI	
3/4 mp male	X	3/4 jic male		5404-12M12J	10K PSI	
3/4 mp male	X	1" jic male		5404-12M16J	10K PSI	
1" mp male	X	1/2 jic male		5404-16M8J	10K PSI	
1" mp male	X	3/4 jic male		5404-16M12J	10K PSI	
1" mp male	X	1" jic male		5404-16M16J	10K PSI	

Medium Pressure Male x Type M Male 5404-_MM_



MALE	X	MALE	NOTE	PART NUMBER	MAWP	COMMENTS
1/4 mp male	X	9/16 tm male		5404-4MM9	20K PSI	
1/4 mp male	X	3/4 tm male		5404-4MM12	20K PSI	
1/4 mp male	X	1" tm male		5404-4MM16	20K PSI	
3/8 mp male	X	9/16 tm male		5404-6MM9	20K PSI	
3/8 mp male	X	3/4 tm male		5404-6MM12	20K PSI	
3/8 mp male	X	1" tm male		5404-6MM16	20K PSI	
9/16 mp male	X	9/16 tm male		5404-9MM9	20K PSI	
9/16 mp male	X	3/4 tm male		5404-9MM12	20K PSI	
9/16 mp male	X	1" tm male		5404-9MM16	20K PSI	
9/16 mp male	X	1-5/16" tm male		5404-9MM21	20K PSI	
3/4 mp male	X	9/16 tm male		5404-12MM9	20K PSI	
3/4 mp male	X	3/4 tm male		5404-12MM12	20K PSI	
3/4 mp male	X	1" tm male		5404-12MM16	20K PSI	
3/4 mp male	X	1-5/16" tm male		5404-12MM21	20K PSI	
1" mp male	X	9/16 tm male		5404-16MM9	20K PSI	
1" mp male	X	3/4 tm male		5404-16MM12	20K PSI	
1" mp male	X	1" tm male		5404-16MM16	20K PSI	
1" mp male	X	1-5/16" tm male		5404-16MM21	20K PSI	
1" mp male	X	1" tm male	1 piece	5404-16MM16-1	20K PSI	
1" mp male	X	1-5/16" tm male	1 piece	5404-16MM21-1	20K PSI	

High Pressure Male x High Pressure Male 5404-_H_H



MALE	X	MALE	NOTE	PART NUMBER	MAWP	COMMENTS
1/4 hp male	X	1/4 hp male		5404-4H4H	60K PSI	
1/4 hp male	X	3/8 hp male		5404-4H6H	60K PSI	
1/4 hp male	X	9/16 hp male		5404-4H9H	60K PSI	
3/8 hp male	X	3/8 hp male		5404-6H6H	60K PSI	
3/8 hp male	X	9/16 hp male		5404-6H9H	60K PSI	
9/16 hp male	X	9/16 hp male		5404-9H9H	60K PSI	

High Pressure Male x High Pressure Female 5406-_H_H



MALE	X	FEMALE	NOTE	PART NUMBER	MAWP	COMMENTS
1/4 hp male	X	3/8 hp female		5406-4H6H	60K PSI	
1/4 hp male	X	9/16 hp female		5406-4H9H	60K PSI	
3/8 hp male	X	1/4 hp female		5406-6H4H	60K PSI	
3/8 hp male	X	9/16 hp female		5406-6H9H	60K PSI	
9/16 hp male	X	1/4 hp female		5406-9H4H	60K PSI	
9/16 hp male	X	3/8 hp female		5406-9H6H	60K PSI	
9/16 hp male	X	9/16 hp female		5406-9H9H	60K PSI	

High Pressure Female x High Pressure Female 5000-_H_H



FEMALE	X	FEMALE	NOTE	PART NUMBER	MAWP	COMMENTS
1/4 hp female	X	1/4 hp female		5000-4H4H	60K PSI	
1/4 hp female	X	3/8 hp female		5000-4H6H	60K PSI	
1/4 hp female	X	9/16 hp female		5000-4H9H	60K PSI	
3/8 hp female	X	3/8 hp female		5000-6H6H	60K PSI	
3/8 hp female	X	9/16 hp female		5000-6H9H	60K PSI	
9/16 hp female	X	9/16 hp female		5000-9H9H	60K PSI	

High Pressure Male x BSP Male 5404-_H_B



MALE	X	MALE	NOTE	PART NUMBER	MAWP	COMMENTS
1/4 hp male	X	1/4 bsp int male	internal cone	5404-4H4B	30K PSI	
1/4 hp male	X	3/8 bsp int male	internal cone	5404-4H6B	30K PSI	
3/8 hp male	X	3/8 bsp int male	internal cone	5404-6H6B	30K PSI	
9/16 hp male	X	1/4 bsp int male	internal cone	5404-9H4B	30K PSI	
9/16 hp male	X	1/2 bsp int male	internal cone	5404-9H8B	30K PSI	
1/4 hp male	X	1/4 bsp ext male	external cone	5404-4H4BE	30K PSI	

High Pressure Male x JIC Male 5404-_H_J



MALE	X	MALE	NOTE	PART NUMBER	MAWP	COMMENTS
1/4 hp male	X	1/4 jic male		5404-4H4J	10K PSI	
1/4 hp male	X	3/8 jic male		5404-4H6J	10K PSI	
1/4 hp male	X	1/2 jic male		5404-4H8J	10K PSI	
3/8 hp male	X	1/4 jic male		5404-6H4J	10K PSI	
3/8 hp male	X	3/8 jic male		5404-6H6J	10K PSI	
3/8 hp male	X	1/2 jic male		5404-6H8J	10K PSI	
9/16 hp male	X	3/8 jic male		5404-9H6J	10K PSI	
9/16 hp male	X	1/2 jic male		5404-9H8J	10K PSI	
9/16 hp male	X	3/4 jic male		5404-9H12J	10K PSI	
9/16 hp male	X	1" jic male		5404-9H16J	10K PSI	

High Pressure Male x Type M Male 5404-_HM_



MALE	X	MALE	NOTE	PART NUMBER	MAWP	COMMENTS
1/4 hp male	X	9/16 tm male		5404-4HM9	40K PSI	
1/4 hp male	X	3/4 tm male		5404-4HM12	30K PSI	
3/8 hp male	X	9/16 tm male		5404-6HM9	40K PSI	
3/8 hp male	X	3/4 tm male		5404-6HM12	30K PSI	
3/8 hp male	X	7/8 tm male		5404-6HM14	40K PSI	
9/16 hp male	X	9/16 tm male		5404-9HM9	40K PSI	
9/16 hp male	X	3/4 tm male		5404-9HM12	30K PSI	
9/16 hp male	X	7/8 tm male		5404-9HM14	40K PSI	
9/16 hp male	X	1" tm male		5404-9HM16	30K PSI	
9/16 hp male	X	1-1/8" tm male		5404-9HM18	40K PSI	
9/16 hp male	X	1-5/16" tm male		5404-9HM21	20K PSI	
1" hp male	X	3/4 tm male		5404-16HM12	30K PSI	
1" hp male	X	1" tm male		5404-16HM16	30K PSI	

BSP Male x BSP Male 5404-_B_B



MALE	X	MALE	NOTE	PART NUMBER	MAWP	COMMENTS
1/4 bsp int male	X	1/4 bsp int male		5404-4B4B	30K PSI	
3/8 bsp int male	X	3/8 bsp int male		5404-6B6B	30K PSI	
1/2 bsp int male	X	1/2 bsp int male		5404-8B8B	30K PSI	
3/4 bsp int male	X	3/4 bsp int male		5404-12B12B	30K PSI	
1/4 bsp int male	X	1/4 bsp ext male		5404-4B4BE	30K PSI	
1/8 bsp ext male	X	1/4 bsp ext male		5404-2BE4BE	30K PSI	
1/4 bsp ext male	X	1/4 bsp ext male		5404-4BE4BE	30K PSI	

BSP Male x Type M Male 5404-_BM_



MALE	X	MALE	NOTE	PART NUMBER	MAWP	COMMENTS
1/4 bsp int male	X	9/16 tm male		5404-4BM9	30K PSI	
3/8 bsp int male	X	9/16 tm male		5404-6BM9	30K PSI	
1/2 bsp int male	X	9/16 tm male		5404-8BM9	30K PSI	
1/4 bsp ext male	X	9/16 tm male		5404-4BEM9	30K PSI	

JIC Male x JIC Male 5404-_J_J



MALE	X	MALE	NOTE	PART NUMBER	MAWP	COMMENTS
1/4 jic male	X	1/4 jic male		5404-4J4J	10K PSI	
1/4 jic male	X	3/8 jic male		5404-4J6J	10K PSI	
1/4 jic male	X	1/2 jic male		5404-4J8J	10K PSI	
3/8 jic male	X	3/8 jic male		5404-6J6J	10K PSI	
3/8 jic male	X	1/2 jic male		5404-6J8J	10K PSI	
1/2 jic male	X	1/2 jic male		5404-8J8J	10K PSI	
1" jic male	X	1" jic male		5404-16J16J	10K PSI	

JIC Male x JIC Female 5406-_J_J



MALE	X	FEMALE	NOTE	PART NUMBER	MAWP	COMMENTS
1/4 jic male	X	1/4 jic male		5406-4J4J	10K PSI	
1/4 jic male	X	3/8 jic male		5406-6J4J	10K PSI	
1/4 jic male	X	1/2 jic male		5406-8J4J	10K PSI	
3/8 jic male	X	1/4 jic male		5406-4J6J	10K PSI	
3/8 jic male	X	3/8 jic male		5406-6J6J	10K PSI	
3/8 jic male	X	1/2 jic male		5406-8J6J	10K PSI	
1/2 jic male	X	3/8 jic male		5406-6J8J	10K PSI	
1/2 jic male	X	1/2 jic male		5406-8J8J	10K PSI	
3/4 jic male	X	3/4 jic male		5406-12J12J	10K PSI	
3/4 jic male	X	1" jic male		5406-16J12J	10K PSI	
1" jic male	X	1" jic male		5406-16J16J	10K PSI	

JIC Female x JIC Female 5000-_J_J



FEMALE	X	FEMALE	NOTE	PART NUMBER	MAWP	COMMENTS
1/4 jic female	X	1/4 jic female		5000-4J4J	10K PSI	
1/4 jic female	X	3/8 jic female		5000-4J6J	10K PSI	
1/4 jic female	X	1/2 jic female		5000-4J8J	10K PSI	
3/8 jic female	X	3/8 jic female		5000-6J6J	10K PSI	
3/8 jic female	X	1/2 jic female		5000-6J8J	10K PSI	
1/2 jic female	X	1/2 jic female		5000-8J8J	10K PSI	
3/4 jic female	X	3/4 jic female		5000-12J12J	10K PSI	
3/4 jic female	X	1" jic female		5000-12J16J	10K PSI	
1" jic female	X	1" jic female		5000-16J16J	10K PSI	

JIC Male x Type M Male 5404-JM



MALE	X	MALE	NOTE	PART NUMBER	MAWP	COMMENTS
1/4 jic male	X	9/16 tm male		5404-4JM9	10K PSI	
3/8 jic male	X	9/16 tm male		5404-6JM9	10K PSI	
3/8 jic male	X	1" tm male		5404-6JM16	10K PSI	
1/2 jic male	X	3/4 tm male		5404-8JM12	10K PSI	
1/2 jic male	X	1" tm male		5404-8JM16	10K PSI	
1/2 jic male	X	1-5/16" tm male		5404-8JM21	10K PSI	
3/4 jic male	X	1" tm male		5404-12JM16	10K PSI	
3/4 jic male	X	1-5/16" tm male		5404-12JM21	10K PSI	

JIC Female x Type M Male 5406-JM



MALE	X	FEMALE	NOTE	PART NUMBER	MAWP	COMMENTS
1/4 jic female	X	9/16 tm male		5406-4JM9	10K PSI	
1/4 jic female	X	3/4 tm male		5406-4JM12	10K PSI	
3/8 jic female	X	9/16 tm male		5406-6JM9	10K PSI	
3/8 jic female	X	3/4 tm male		5406-6JM12	10K PSI	
3/8 jic female	X	1" tm male		5406-6JM16	10K PSI	
1/2 jic female	X	9/16 tm male		5406-8JM9	10K PSI	
1/2 jic female	X	1-5/16" tm male		5406-8JM21	10K PSI	
3/4 jic female	X	1" tm male		5406-12JM16	10K PSI	
3/4 jic female	X	1-5/16" tm male		5406-12JM21	10K PSI	

Type M Male x Type M Male 5404-M_M



MALE	X	MALE	NOTE	PART NUMBER	MAWP	COMMENTS
9/16 tm male	X	9/16 tm male		5404-M9M9	40K PSI	
9/16 tm male	X	3/4 tm male		5404-M9M12	30K PSI	
9/16 tm male	X	7/8 tm male		5404-M9M14	40K PSI	
9/16 tm male	X	1" tm male		5404-M9M16	30K PSI	
9/16 tm male	X	1-1/8" tm male		5404-M9M18	40K PSI	
9/16 tm male	X	1-5/16" tm male		5404-M9M21	20K PSI	
3/4 tm male	X	3/4 tm male		5404-M12M12	30K PSI	
3/4 tm male	X	7/8 tm male		5404-M12M14	30K PSI	
3/4 tm male	X	1" tm male		5404-M12M16	30K PSI	
3/4 tm male	X	1-5/16" tm male		5404-M12M21	20K PSI	
7/8 tm male	X	7/8 tm male		5404-M14M14	40K PSI	
7/8 tm male	X	1" tm male		5404-M14M16	30K PSI	
7/8 tm male	X	1-1/8" tm male		5404-M14M18	40K PSI	
1" tm male	X	1" tm male		5404-M16M16	30K PSI	
1" tm male	X	1-5/16" tm male		5404-M16M21	20K PSI	
1-1/8" tm male	X	1-1/8" tm male		5404-M18M18	40K PSI	
1-5/16" tm male	X	1-5/16" tm male		5404-M21M21	20K PSI	

Caps 5406C-



FEMALE	NOTE	PART NUMBER	MAWP	COMMENTS
1/8 npt cap		5406C-2N	15K PSI	
1/4 npt cap		5406C-4N	15K PSI	
3/8 npt cap		5406C-6N	15K PSI	
1/2 npt cap		5406C-8N	15K PSI	
3/4 npt cap		5406C-12N	10K PSI	
1" npt cap		5406C-16N	10K PSI	
1/4 mp cap		5406C-4M	20K PSI	
3/8 mp cap		5406C-6M	20K PSI	
9/16 mp cap		5406C-9M	20K PSI	
3/4 mp cap		5406C-12M	20K PSI	
1" mp cap		5406C-16M	20K PSI	
1/4 hp cap		5406C-4H	60K PSI	
3/8 hp cap		5406C-6H	60K PSI	
9/16 hp cap		5406C-9H	60K PSI	
1/4 jic cap		5406-4J	10K PSI	
3/8 jic cap		5406-6J	10K PSI	
1/2 jic cap		5406-8J	10K PSI	
5/8 jic cap		5406-10J	10K PSI	
3/4 jic cap		5406-12J	10K PSI	
1" jic cap		5406-16J	10K PSI	
9/16 tm for cap	needs a nut	5406C-M9	40K PSI	
9/16 tm nut		5406N-M9	40K PSI	
3/4 tm for cap	needs a nut	5406C-M12	30K PSI	
1" tm for cap	needs a nut	5406C-M16	30K PSI	
1-5/16" tm for cap	needs a nut	5406C-M21	20K PSI	

Plugs 5406P-



MALE	NOTE	PART NUMBER	MAWP	COMMENTS
1/16 npt	hex	5406P-1N		
1/8 npt	hex	5406P-2N		
1/4 npt	hex	5406P-4N		
3/8 npt	hex	5406P-6N		
1/2 npt	hex	5406P-8N		
3/4 npt	hex	5406P-12N		
1" npt	hex	5406P-16N		
1/4 mp	round	5406P-4M		
3/8 mp	round	5406P-6M		
9/16 mp	round	5406P-9M		
3/4 mp	round	5406P-12M		
1" mp	round	5406P-16M		
1/4 hp	round	5406P-4H		
3/8 hp	round	5406P-6H		
9/16 hp	round	5406P-9H		
1/4 bsp ext	hex	5406P-4BE		
1/4 jic	hex	5406P-4J		
3/8 jic	hex	5406P-6J		
1/2 jic	hex	5406P-8J		
5/8 jic	hex	5406P-10J		
3/4 jic	hex	5406P-12J		
1" jic	hex	5406P-16J		
9/16 tm	hex	5406P-M9		
3/4 tm	hex	5406P-M12		
7/8 tm	hex	5406P-M14		
1" tm	hex	5406P-M16		
1-1/8" tm	hex	5406P-M18		
1-5/16" tm	hex	5406P-M21		
1/4 npt		5406P-4NS		
3/8 npt	socket	5406P-6NS		
1/2 npt	socket	5406P-8NS		

Round Nipples 5404N-___.0



MALE	X	MALE	NOTE	PART NUMBER	MAWP	COMMENTS
1/4 npt male	X	1/4 npt male	2" long	5404N-4N2.0	15K PSI	
1/4 npt male	X	1/4 npt male	3" long	5404N-4N3.0	15K PSI	
1/4 npt male	X	1/4 npt male	4" long	5404N-4N4.0	15K PSI	
1/4 npt male	X	1/4 npt male	6" long	5404N-4N6.0	15K PSI	
3/8 npt male	X	3/8 npt male	2" long	5404N-6N2.0	15K PSI	
3/8 npt male	X	3/8 npt male	3" long	5404N-6N3.0	15K PSI	
3/8 npt male	X	3/8 npt male	4" long	5404N-6N4.0	15K PSI	
3/8 npt male	X	3/8 npt male	6" long	5404N-6N6.0	15K PSI	
1/2 npt male	X	1/2 npt male	2" long	5404N-8N2.0	15K PSI	
1/2 npt male	X	1/2 npt male	3" long	5404N-8N3.0	15K PSI	
1/2 npt male	X	1/2 npt male	4" long	5404N-8N4.0	15K PSI	
1/2 npt male	X	1/2 npt male	6" long	5404N-8N6.0	15K PSI	
3/4 npt male	X	3/4 npt male	3" long	5404N-12N3.0	10K PSI	
3/4 npt male	X	3/4 npt male	4" long	5404N-12N4.0	10K PSI	
3/4 npt male	X	3/4 npt male	6" long	5404N-12N6.0	10K PSI	
1" npt male	X	1" npt male	3" long	5404N-16N3.0	10K PSI	
1" npt male	X	1" npt male	4" long	5404N-16N4.0	10K PSI	
1" npt male	X	1" npt male	6" long	5404N-16N6.0	10K PSI	
1/4 mp male	X	1/4 mp male	3" long	5404N-4M3.0	20K PSI	
1/4 mp male	X	1/4 mp male	6" long	5404N-4M6.0	20K PSI	
3/8 mp male	X	3/8 mp male	3" long	5404N-6M3.0	20K PSI	
3/8 mp male	X	3/8 mp male	6" long	5404N-6M6.0	20K PSI	
9/16 mp male	X	9/16 mp male	3" long	5404N-9M3.0	20K PSI	
9/16 mp male	X	9/16 mp male	4" long	5404N-9M4.0	20K PSI	
9/16 mp male	X	9/16 mp male	6" long	5404N-9M6.0	20K PSI	
1/4 hp male	X	1/4 hp male	3" long	5404N-4H3.0	60K PSI	
1/4 hp male	X	1/4 hp male	6" long	5404N-4H6.0	60K PSI	
3/8 hp male	X	3/8 hp male	3" long	5404N-6H3.0	60K PSI	
3/8 hp male	X	3/8 hp male	6" long	5404N-6H6.0	60K PSI	
9/16 hp male	X	9/16 hp male	4" long	5404N-9H4.0	60K PSI	
9/16 hp male	X	9/16 hp male	6" long	5404N-9H6.0	60K PSI	

Slim Line Couplers

5000S-__

Must only be used inside a protective covering



FEMALE	X	FEMALE	NOTE	PART NUMBER	MAWP	COMMENTS
1/16 npt female	X	1/16 npt female		5000S-1N1N	10K PSI	
1/16 npt female	X	1/8 npt female		5000S-1N2N	10K PSI	
1/8 npt female	X	1/8 npt female		5000S-2N2N	10K PSI	
1/8 npt female	X	1/4 npt female		5000S-2N4N	10K PSI	
1/4 npt female	X	1/4 npt female		5000S-4N4N	10K PSI	
3/8 npt female	X	3/8 npt female		5000S-6N6N	10K PSI	
1/2 npt female	X	1/2 npt female		5000S-8N8N	10K PSI	
1/4 mp female	X	1/4 mp female		5000S-4M4M	20K PSI	
1/4 mp female	X	3/8 mp female		5000S-4M6M	20K PSI	
1/4 mp female	X	9/16 mp female		5000S-4M9M	20K PSI	
3/8 mp female	X	3/8 mp female		5000S-6M6M	20K PSI	
3/8 mp female	X	9/16 mp female		5000S-6M9M	20K PSI	
9/16 mp female	X	9/16 mp female		5000S-9M9M	20K PSI	
1/4 hp female	X	1/4 hp female		5000S-4H4H	40K PSI	
3/8 hp female	X	3/8 hp female		5000S-6H6H	40K PSI	
9/16 hp female	X	9/16 hp female		5000S-9H9H	40K PSI	

Round Elbows



FEMALE	NOTE	PART NUMBER	MAWP	COMMENTS
1/8 npt female	90 Degrees	5504-2N	15K PSI	
1/4 npt female	90 Degrees	5504-4N	15K PSI	
3/8 npt female	90 Degrees	5504-6N	15K PSI	
1/2 npt female	90 Degrees	5504-8N	15K PSI	
3/4 npt female	90 Degrees	5504-12N	10K PSI	
1" npt female	90 Degrees	5504-16N	10K PSI	
1/4 npt female	45 Degrees	5505-4N	15K PSI	
3/8 npt female	45 Degrees	5505-6N	15K PSI	
1/2 npt female	45 Degrees	5505-8N	15K PSI	
3/4 npt female	45 Degrees	5505-12N	10K PSI	



Flat Elbows

X	NOTE	PART NUMBER	MAWP	COMMENTS
1/4 npt male		5500F-4N	15K PSI	
1/4 npt female		5504F-4N 1	5K PSI	
1/4 npt street	male x female	5502F-4N	15K PSI	
1/2 npt street	male x female	5502F-8N	15K PSI	
1/4 mp female		5504-4M	20K PSI	
3/8 mp female		5504-6M	20K PSI	
9/16 mp female		5504-9M	20K PSI	
3/4 mp female		5504-12M	20K PSI	
1" mp female		5504-16M	20K PSI	
1/4 hp female		5504-4H	60K PSI	
3/8 hp female		5504-6H	60K PSI	
9/16 hp female		5504-9H	60K PSI	
1/4 npt male X 9/16 tm male		5500F-4NM9	15K PSI	

Round Tees



FEMALE	NOTE	PART NUMBER	MAWP	COMMENTS
1/8 npt female		5605-2N	15K PSI	
1/4 npt female		5605-4N	15K PSI	
3/8 npt female		5605-6N	15K PSI	
1/2 npt female		5605-8N	15K PSI	
3/4 npt female		5605-12N	10K PSI	
1" npt female		5605-16N	10K PSI	
1/4 bsp female		5605-4B	30K PSI	

Flat Tees



FEMALE	NOTE	PART NUMBER	MAWP	COMMENTS
1/4 npt female		5605F-4N	15K PSI	
1/4 mp female		5605-4M	20K PSI	
3/8 mp female		5605-6M	20K PSI	
9/16 mp female		5605-9M	20K PSI	
3/4 mp female		5605-12M	20K PSI	
1" mp female		5605-16M	20K PSI	
1/4 hp male		5605-4H	60K PSI	
3/8 hp male		5605-6H	60K PSI	
9/16 hp male		5605-9H	60K PSI	

Round Crosses



FEMALE	NOTE	PART NUMBER	MAWP	COMMENTS
1/8 npt female		5652-2N	15K PSI	
1/4 npt female		5652-4N	15K PSI	
3/8 npt female		5652-6N	15K PSI	
1/2 npt female		5652-8N	15K PSI	
3/4 npt female		5652-12N	10K PSI	
1" npt female		5652-16N	10K PSI	
1/4 bsp female		5652-4B	30K PSI	

Flat Crosses



FEMALE	NOTE	PART NUMBER	MAWP	COMMENTS
1/4 mp female		5652-4M	20K PSI	
3/8 mp female		5652-6M	20K PSI	
9/16 mp female		5652-9M	20K PSI	
3/4 mp female		5652-12M	20K PSI	
1" mp female		5652-16M	20K PSI	
1/4 hp female		5652-4H	60K PSI	
3/8 hp female		5652-6H	60K PSI	
9/16 hp female		5652-9H	60K PSI	

Medium Pressure Gland Nuts 0318-_M



MALE	NOTE	PART NUMBER	MAWP	COMMENTS
1/4 mp gland		0318-4M	20K PSI	
3/8 mp gland		0318-6M	20K PSI	
9/16 mp gland		0318-9M	20K PSI	
3/4 mp gland		0318-12M	20K PSI	
1" mp gland		0318-16M	20K PSI	

Medium Pressure Collars 0319-_M



FEMALE	NOTE	PART NUMBER	MAWP	COMMENTS
1/4 mp collar		0319-4M	20K PSI	
3/8 mp collar		0319-6M	20K PSI	
9/16 mp collar		0319-9M	20K PSI	
3/4 mp collar		0319-12M	20K PSI	
1" mp collar		0319-16M	20K PSI	

High Pressure Gland Nuts 0318-_H



FEMALE	NOTE	PART NUMBER	MAWP	COMMENTS
1/4 hp gland		0318-4H	60K PSI	
3/8 hp gland		0318-6H	60K PSI	
9/16 hp gland		0318-9H	60K PSI	

High Pressure Collars 0319-_H



FEMALE	NOTE	PART NUMBER	MAWP	COMMENTS
1/4 hp collar		0319-4H	60K PSI	
3/8 hp collar		0319-6H	60K PSI	
9/16 hp collar		0319-9H	60K PSI	

Quick Disconnect Female Couplers with Check Valve HPC600-0-__



THREAD	NOTE	PART NUMBER	MAWP	COMMENTS
9/16 tm male		HPC600-0-M9	30K PSI	
3/4 tm male		HPC600-0-M12	30K PSI	
1" tm male		HPC600-0-M16	30K PSI	
1/4 jic male		HPC600-0-4J	10K PSI	
3/8 jic male		HPC600-0-6J	10K PSI	
1/2 jic male		HPC600-0-8J	10K PSI	
1/4 npt male		HPC600-0-4N	15K PSI	
3/8 npt male		HPC600-0-6N	15K PSI	
1/2 npt male		HPC600-0-8N	15K PSI	
1/4 npt female		HPC600-0-4NF	15K PSI	
3/8 npt female		HPC600-0-6NF	15K PSI	
1/2 npt female		HPC600-0-8NF	15K PSI	
1/4 mp male		HPC600-0-4M	20K PSI	
3/8 mp male		HPC600-0-6M	20K PSI	
9/16 mp male		HPC600-0-9M	20K PSI	
1/4 hp male		HPC600-0-4H	30K PSI	
3/8 hp male		HPC600-0-6H	30K PSI	
9/16 hp male		HPC600-0-9H	30K PSI	

Quick Disconnect Male Nipple with Check Valve HPC600-2-__



THREAD	NOTE	PART NUMBER	MAWP	COMMENTS
9/16 tm male		HPC600-2-M9	30K PSI	
3/4 tm male		HPC600-2-M12	30K PSI	
1" tm male		HPC600-2-M16	30K PSI	
1/4 jic male		HPC600-2-4J	10K PSI	
3/8 jic male		HPC600-2-6J	10K PSI	
1/2 jic male		HPC600-2-8J	10K PSI	
1/4 npt male		HPC600-2-4N	15K PSI	
3/8 npt male		HPC600-2-6N	15K PSI	
1/2 npt male		HPC600-2-8N	15K PSI	
1/4 npt female		HPC600-2-4NF	15K PSI	
3/8 npt female		HPC600-2-6NF	15K PSI	
1/2 npt female		HPC600-2-8NF	15K PSI	
1/4 mp male		HPC600-2-4M	20K PSI	
3/8 mp male		HPC600-2-6M	20K PSI	
9/16 mp male		HPC600-2-9M	20K PSI	
1/4 hp male		HPC600-2-4H	30K PSI	
3/8 hp male		HPC600-2-6H	30K PSI	
9/16 hp male		HPC600-2-9H	30K PSI	

Quick Disconnect Male Nipple without Check Valve HPC600-1-__



THREAD	NOTE	PART NUMBER	MAWP	COMMENTS
9/16 tm male		HPC600-1-M9	30K PSI	
3/4 tm male		HPC600-1-M12	30K PSI	
1" tm male		HPC600-1-M16	30K PSI	
1/4 jic male		HPC600-1-4J	10K PSI	
3/8 jic male		HPC600-1-6J	10K PSI	
1/2 jic male		HPC600-1-8J	10K PSI	
1/4 npt male		HPC600-1-4N	15K PSI	
3/8 npt male		HPC600-1-6N	15K PSI	
1/2 npt male		HPC600-1-8N	15K PSI	
1/4 npt female		HPC600-1-4NF	15K PSI	
3/8 npt female		HPC600-1-6NF	15K PSI	
1/2 npt female		HPC600-1-8NF	15K PSI	
1/4 mp male		HPC600-1-4M	20K PSI	
3/8 mp male		HPC600-1-6M	20K PSI	
9/16 mp male		HPC600-1-9M	20K PSI	
1/4 hp male		HPC600-1-4H	30K PSI	
3/8 hp male		HPC600-1-6H	30K PSI	
9/16 hp male		HPC600-1-9H	30K PSI	

Two Way Straight Needle Valves NV2S__-__K



THREAD	NOTE	PART NUMBER	MAWP	COMMENTS
1/4 npt female		NV2S4N-15K	15K PSI	
3/8 npt female		NV2S6N-15K	15K PSI	
1/2 npt female		NV2S8N-15K	15K PSI	
1/2 npt female X 1/2 npt male		NV2S8N8N-15K	15K PSI	
1/4 mp female		NV2S4M-20K	20K PSI	
3/8 mp female		NV2S6M-20K	20K PSI	
9/16 mp female		NV2S9M-20K	20K PSI	
1/4 hp female		NV2S4H-30K	30K PSI	
3/8 hp female		NV2S6H-30K	30K PSI	
9/16 hp female		NV2S9H-30K	30K PSI	
1/4 hp female		NV2S4H-60K	60K PSI	
3/8 hp female		NV2S6H-60K	60K PSI	
9/16 hp female		NV2S9H-60K	60K PSI	



5829 W. Sam Houston Parkway N, Suite 805

Houston, Texas 77041

Telephone: (713)937-0017

Fax: (713)937-0018

sales@ultrapressurecomponents.com

www.ultrapressurecomponents.com