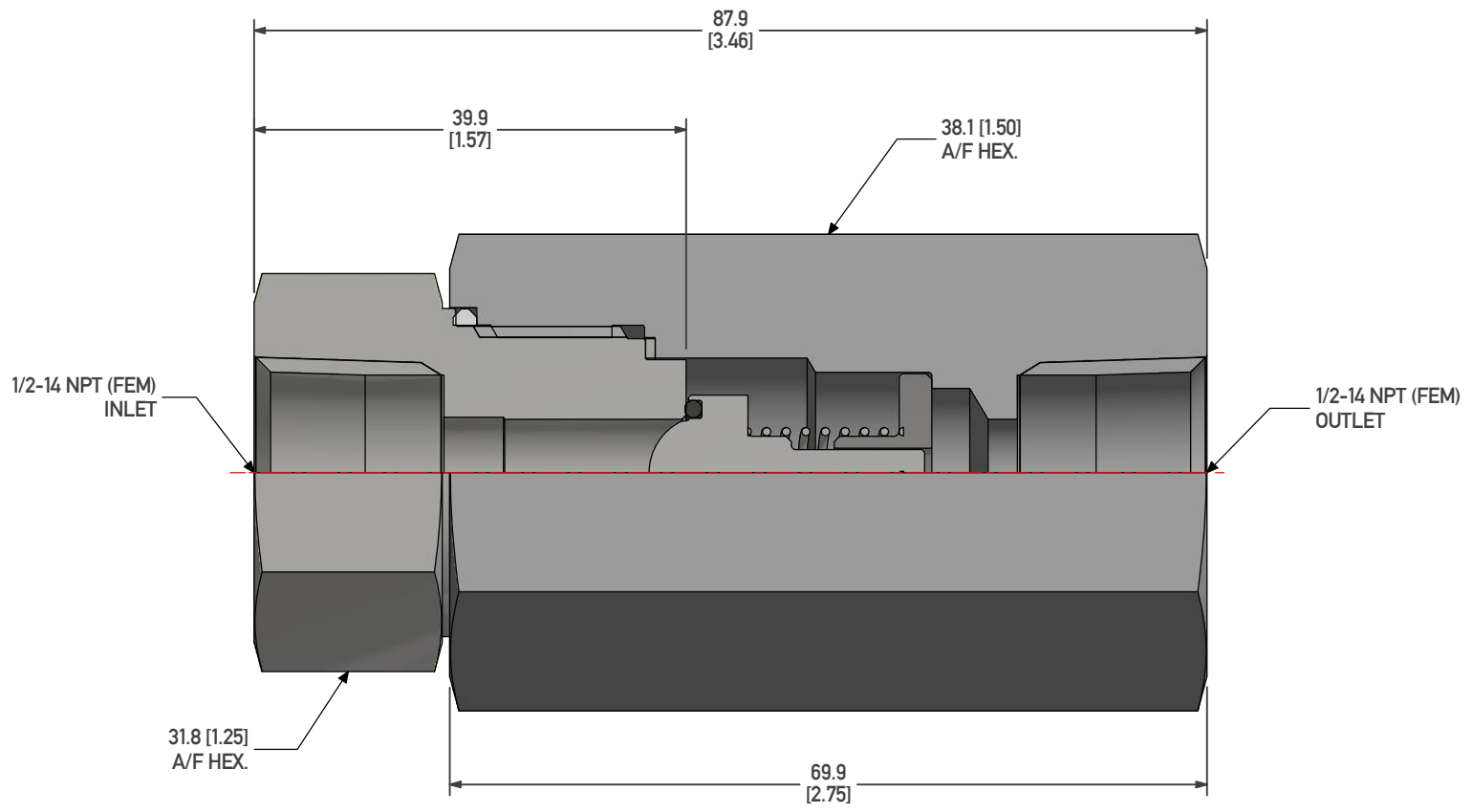
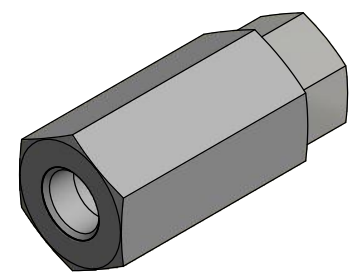


1 2 3 4 5 6 7 8 9 10

J  
I  
H  
G  
F  
E  
D  
C  
B  
A



HI-CHECK NON RETURN VALVE (10mm ORIFICE)  
 INLET : 1/2-14 NPT (FEM)  
 OUTLET : 1/2-14 NPT (FEM)  
 BODY MATERIAL: 316 STAINLESS STEEL  
 SEAL MATERIAL : FLUOROCARBON RUBBER V1238-95  
 MASS : 0.7 kg Approx.

THIS DRAWING, THE MARKET AND BUSINESS STRATEGY INFORMATION (CONTAINED OR EXPRESSED), TOGETHER WITH ALL INNOVATIONS, DESIGNS, INVENTIONS, SYSTEMS AND PROCESSES SHOWN OR DISCUSSED ARE THE SOLE PROPERTY AND COPYRIGHT OF PARKER HANNIFIN PLC. THIS DRAWING IS FURNISHED ON THE UNDERSTANDING THAT THE DRAWING AND THE INFORMATION IT CONTAINS WILL NOT BE COPIED OR DISCLOSED TO OTHERS EXCEPT WITH THE WRITTEN CONSENT OF PARKER HANNIFIN. WILL NOT BE USED TO THE DETRIMENT OF PARKER HANNIFIN, AND WILL BE RETURNED UPON REQUEST BY PARKER HANNIFIN. THIS INTELLECTUAL PROPERTY CANNOT BE USED, REPRODUCED, COPIED, TRANSFERRED OR COMMUNICATED IN ANY WAY BY OR TO THIRD PARTIES. FURTHER DESIGN, PATENT AND COPYRIGHTS IN RESPECT OF PRODUCT AND COMPONENTS ALSO EXIST. YOUR ADHERENCE TO THE ABOVE CLAIM IS IMPLICIT UPON YOUR USE OF THIS DRAWING.

© 2021

THE ITEMS DESCRIBED IN THIS DOCUMENT, INCLUDING WITHOUT LIMITATION, PRODUCT FEATURES, SPECIFICATIONS, DESIGNS, AVAILABILITY AND PRICING, ARE SUBJECT TO CHANGE BY PARKER HANNIFIN CORPORATION AND ITS SUBSIDIARIES AT ANY TIME WITHOUT NOTICE.

ALL DIMENSIONS IN mm WITH IMPERIAL EQUIVALENTS IN PARENTHESIS

DRAWING TITLE :

**HI-CHECK NON RETURN VALVE**

1/2-14 NPT (FEM) INLET/OUTLET

**10000 PSI RANGE**

**CUSTOMER ASSEMBLY DRAWING**

DO NOT SCALE	IF IN DOUBT ASK	WWW.PARKER.COM/IPD
REV No. :-	Version No. .1	UNLESS STATED 3rd ANGLE PROJECTION
ECO NO. : ECO-0380213	ECO DATE: 18/10/2021	
DRAWN BY: TECHM	DRAWN DATE: 18/10/2021	
DESCRIPTION OF REV / VERSION CHANGE .1 UPDATED TO LATEST DRAWING STANDARD		
CHECKED & APPROVED BY: Approvals Using Electronic 'ENOVIA ECO WORKFLOW'		

**Parker**

ENGINEERING YOUR SUCCESS.

HCYB8FFHP-ED