

Model No.

SDV 10 - 1 P 5 S - 1 C L - P

Vane pump

Series
10

Mounting

1 = 2-bolt flange, 3" 1/4 pilot (SAE A) (standard)

Inlet port connections

P = 1" NPTF thread
 S = 1" 5/16-12 UNF-2B thread
 B = G 1" (BSPP)

Ring size

(Delivery at 1200 rpm and 100 psi)

1 = 1 USgpm
 2 = 2 USgpm
 3 = 3 USgpm
 4 = 4 USgpm
 5 = 5 USgpm
 6 = 6 USgpm
 7 = 7 USgpm

Series Identity

Shaft rotation (view on shaft end)
 L = Counter-clockwise
 Omit for clockwise

Position of outlet port (Viewed from cover end of pump)

A = Opposite inlet port
 B = 90° CCW from inlet
 C = In line with inlet
 D = 90° CW from inlet

Shaft

1 = Straight keyed
 11 = Splined
 38 = 11 teeth - 3/4" OD

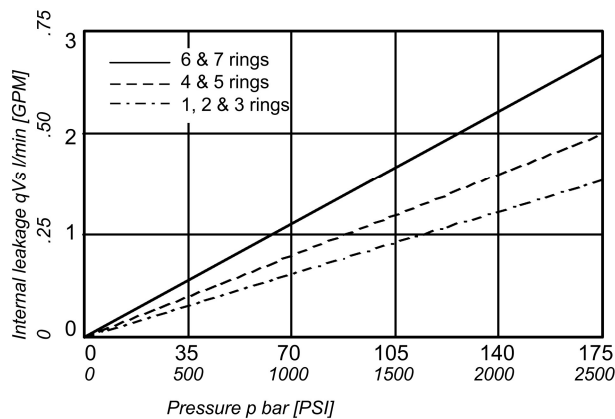
Outlet port connections

P = 1/2" NPTF thread
 S = 3/4" -16 UNF-2B thread
 B = G 1/2" (BSPP)

Operating characteristics

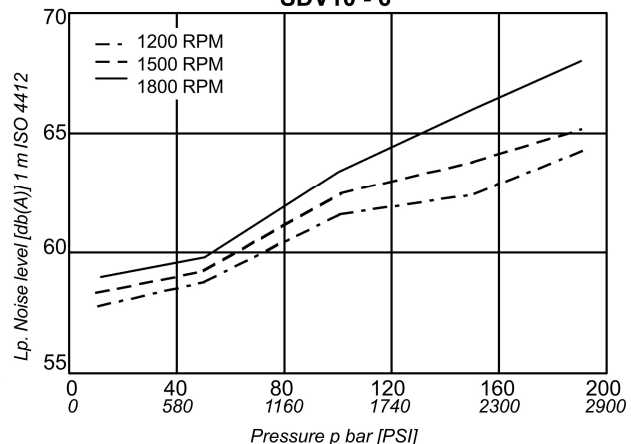
Model Series	Ring Size	Displ. cm ³ /rev (in ³ /rev)	Max. Pressure bar (psi)	Speed RPM	Typical delivery L/min (USgpm)				Typical input power KW (hp)			
					0 bar	0 PSI	150 bar	2000 PSI	7 bar	80 PSI	175 bar	2500 PSI
SDV10	1	3,3 (.20)	175 (2500)	1200	4,0	1,0	2,0	0,5	0,07	0,09	0,71	0,96
				1500	5,0	1,3	3,0	0,8	0,09	0,12	1,08	1,44
				1800	5,9	1,6	3,9	1,0	0,10	0,14	1,44	1,93
	2	6,6 (.40)	175 (2500)	1200	7,9	2,1	5,9	1,6	0,14	0,18	2,16	2,89
				1500	9,9	2,6	7,9	2,1	0,17	0,23	2,88	3,86
				1800	11,9	3,1	9,9	2,6	0,21	0,28	3,60	4,83
	3	9,8 (.60)	175 (2500)	1200	11,8	3,1	9,8	2,6	0,20	0,27	3,56	4,77
				1500	14,7	3,9	12,7	3,4	0,26	0,34	4,63	6,21
				1800	17,6	4,7	15,6	4,1	0,31	0,41	5,70	7,65
	4	13,1 (.80)	175 (2500)	1200	15,7	4,2	12,3	3,3	0,27	0,37	4,49	6,02
				1500	19,7	5,2	16,3	4,3	0,34	0,46	5,92	7,94
				1800	23,6	6,2	20,2	5,3	0,41	0,55	7,36	9,87
	5	16,4 (1.00)	175 (2500)	1200	19,7	5,2	16,3	4,3	0,34	0,46	5,94	7,96
				1500	24,6	6,5	21,2	5,6	0,43	0,57	7,73	10,36
				1800	29,5	7,8	26,1	6,9	0,51	0,69	9,52	12,77
	6	19,5 (1.19)	152 (2200)	1200	23,4	6,2	19,2	5,1	0,41	0,55	7,00	9,39
				1500	29,3	7,7	25,1	6,6	0,51	0,68	9,13	12,25
				1800	35,1	9,3	30,9	8,2	0,61	0,82	11,27	15,11
	7	22,8 (1.39)	138 (2000)	1200	27,4	7,2	23,2	6,1	0,48	0,64	8,44	11,32
				1500	34,2	9,0	30,0	7,9	0,60	0,80	10,94	14,67
				1800	41,0	10,8	36,8	9,7	0,71	0,96	13,43	18,01

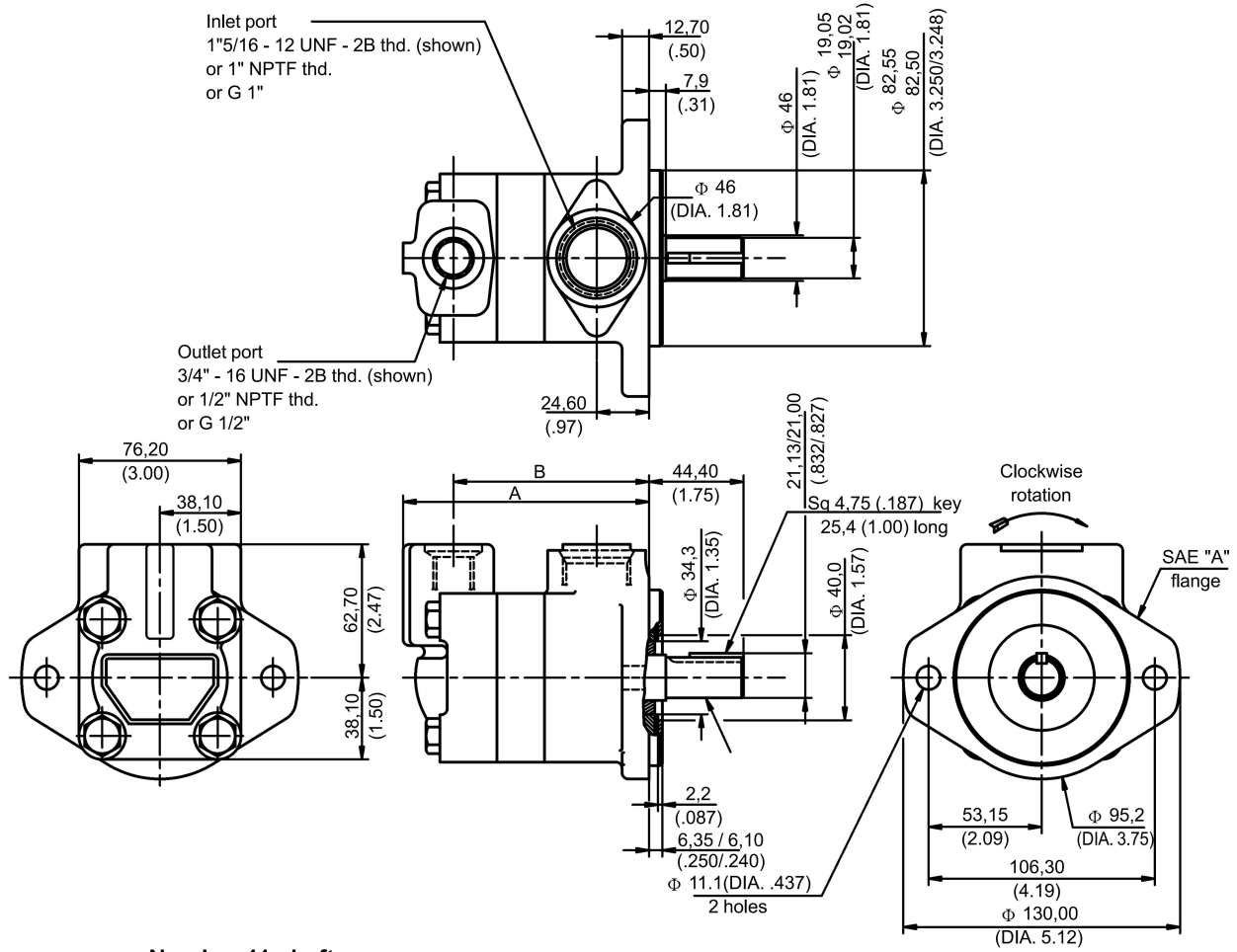
Internal leakage (typical)



Do not operate pump more than 5 seconds at any speed or viscosity if internal leakage is higher than 50% of theoretical flow. Total leakage is the sum of each section loss at its operating conditions.

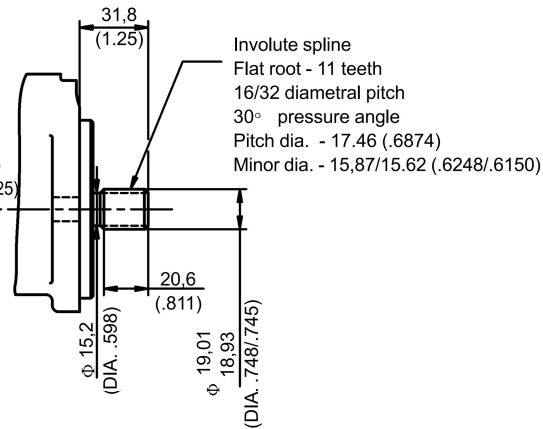
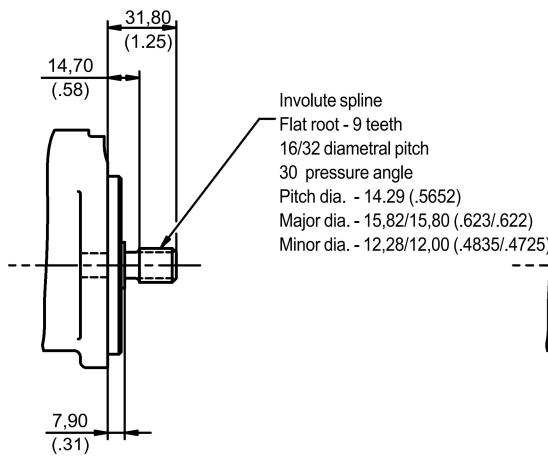
**Noise level (typical)
 SDV10 - 6**





Number 11 shaft

Number 38 shaft



Ring size	Dimensions		Weight Kg (lb)
	A	B	
1	15,6 (4,55)	91,9 (3,62)	4,5 - (10,0)
2	115,6 (4,55)	91,9 (3,62)	4,5 - (10,0)
3	115,6 (4,55)	91,9 (3,62)	4,5 - (10,0)
4	121,9 (4,80)	98,3 (3,87)	5,6 - (12,5)
5	121,9 (4,80)	98,3 (3,87)	5,6 - (12,5)
6	127,0 (5,00)	103,4 (4,07)	6,8 - (15,0)
7	127,0 (5,00)	103,4 (4,07)	6,8 - (15,0)

Weight:
 SDV 10 Series: 4,5 - 6,8kg
 (10 - 15 lb)